

4.2) Quartic graphs

Worked example

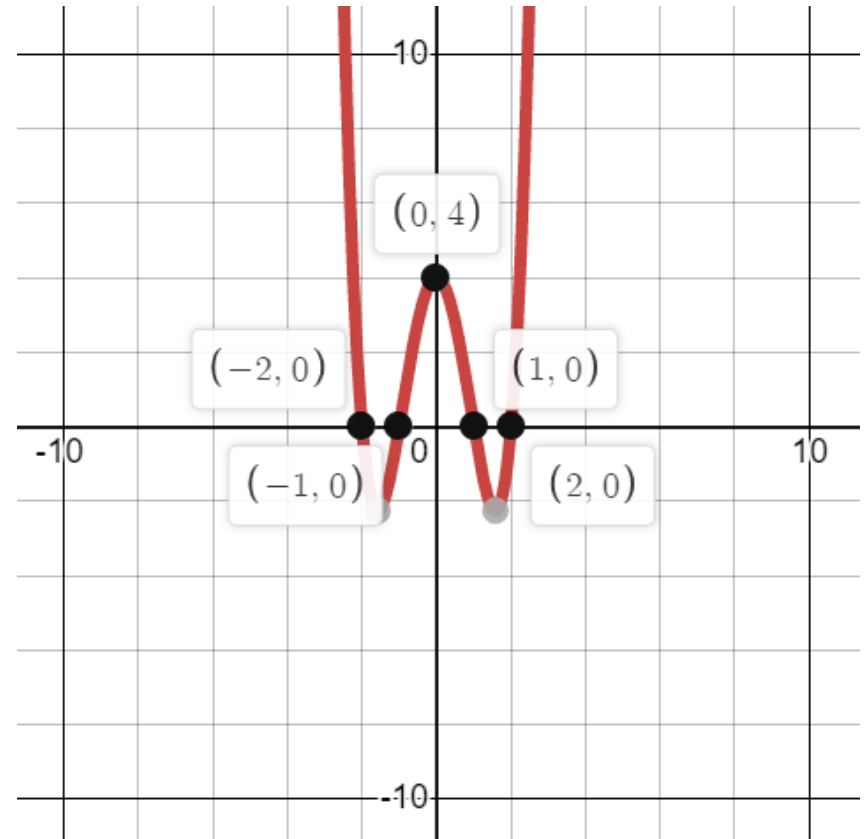
Sketch the graph of:

$$y = (x + 3)(x + 4)(x - 3)(x - 4)$$

Your turn

Sketch the graph of:

$$y = (x + 1)(x + 2)(x - 1)(x - 2)$$



Worked example

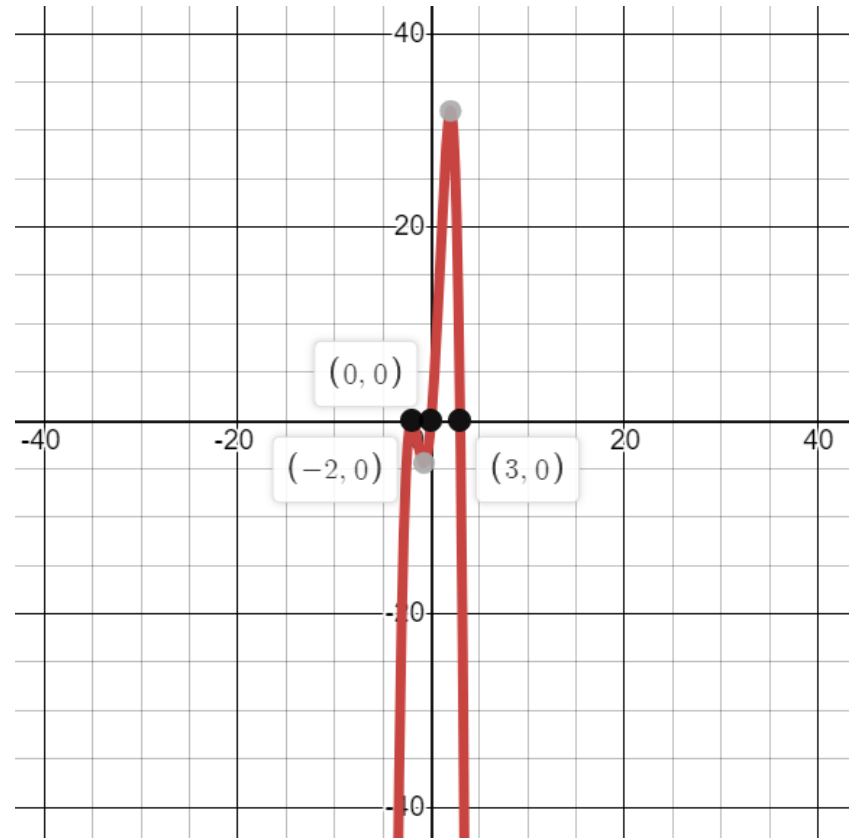
Sketch the graph of:

$$y = x(x - 3)^2(2 - x)$$

Your turn

Sketch the graph of:

$$y = x(x + 2)^2(3 - x)$$



Worked example

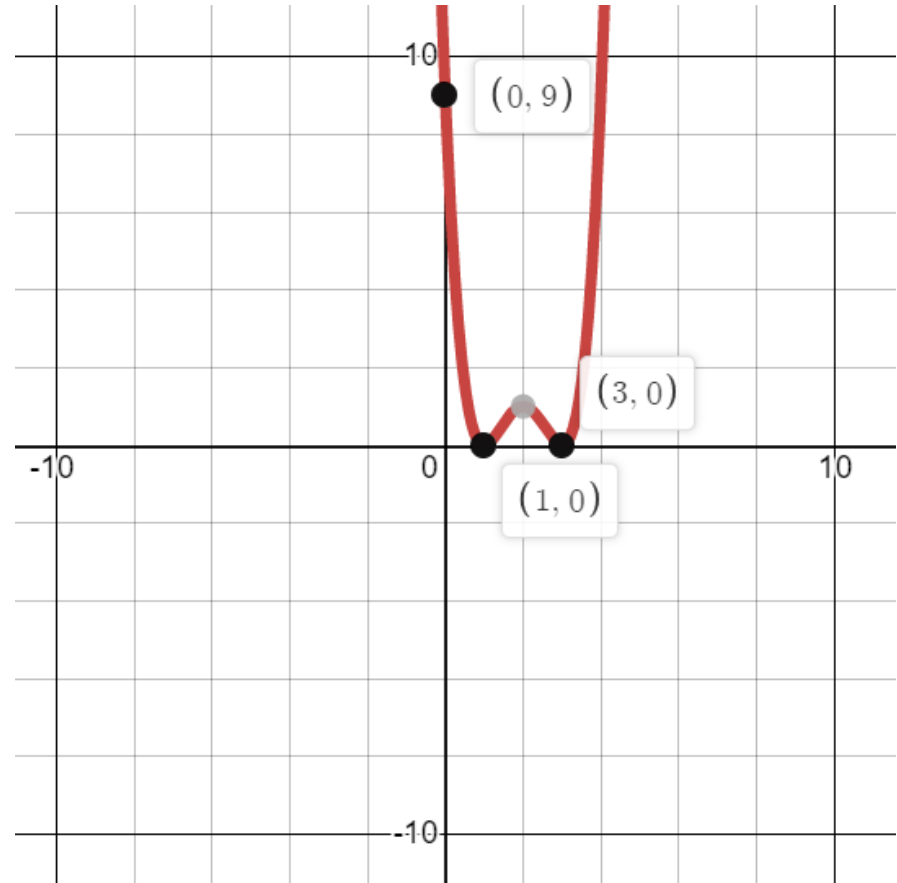
Sketch the graph of:

$$y = (x + 2)^2(x - 4)^2$$

Your turn

Sketch the graph of:

$$y = (x - 1)^2(x - 3)^2$$



Worked example

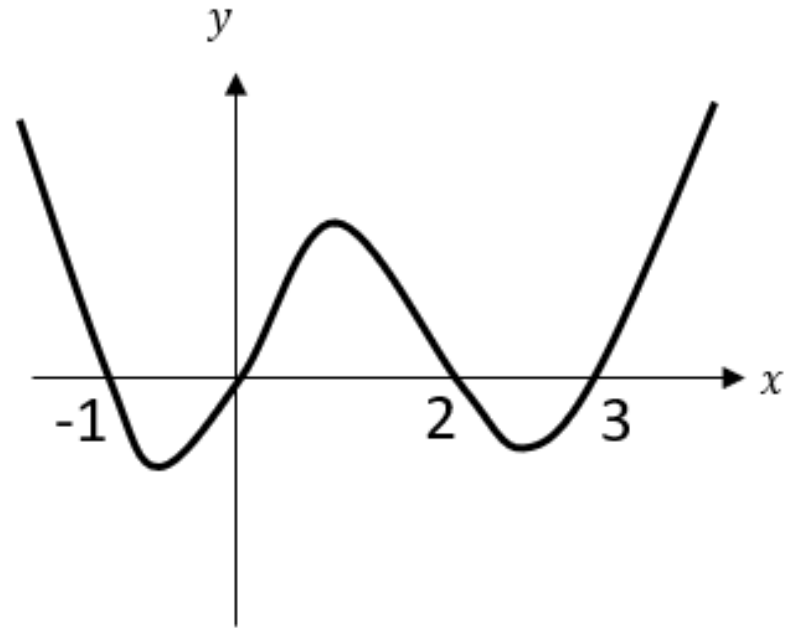
Sketch the graph of:

$$y = x(x - 4)(x + 5)(x + 6)$$

Your turn

Sketch the graph of:

$$y = x(x + 1)(x - 2)(x - 3)$$



Worked example

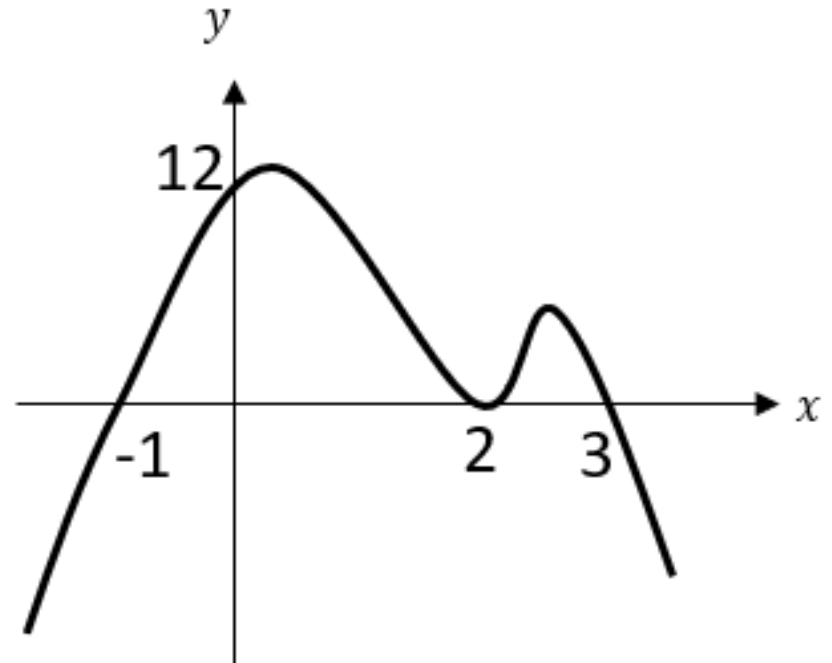
Sketch the graph of:

$$y = (x + 4)^2(x - 5)(6 - x)$$

Your turn

Sketch the graph of:

$$y = (x - 2)^2(x + 1)(3 - x)$$



Worked example

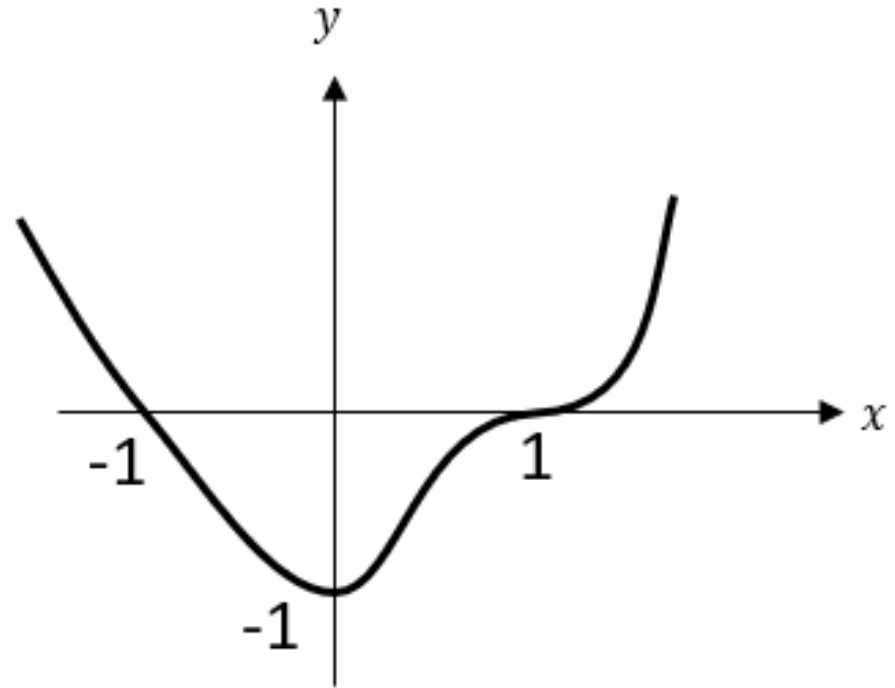
Sketch the graph of:

$$y = (x - 2)(x + 2)^3$$

Your turn

Sketch the graph of:

$$y = (x + 1)(x - 1)^3$$



Worked example

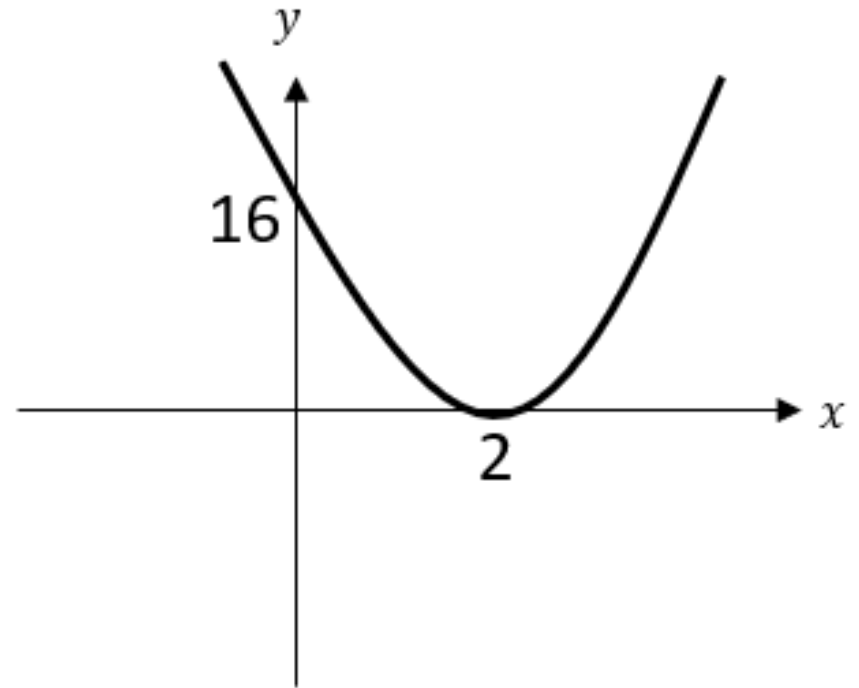
Sketch the graph of:

$$y = (x + 3)^4$$

Your turn

Sketch the graph of:

$$y = (x - 2)^4$$



Worked example

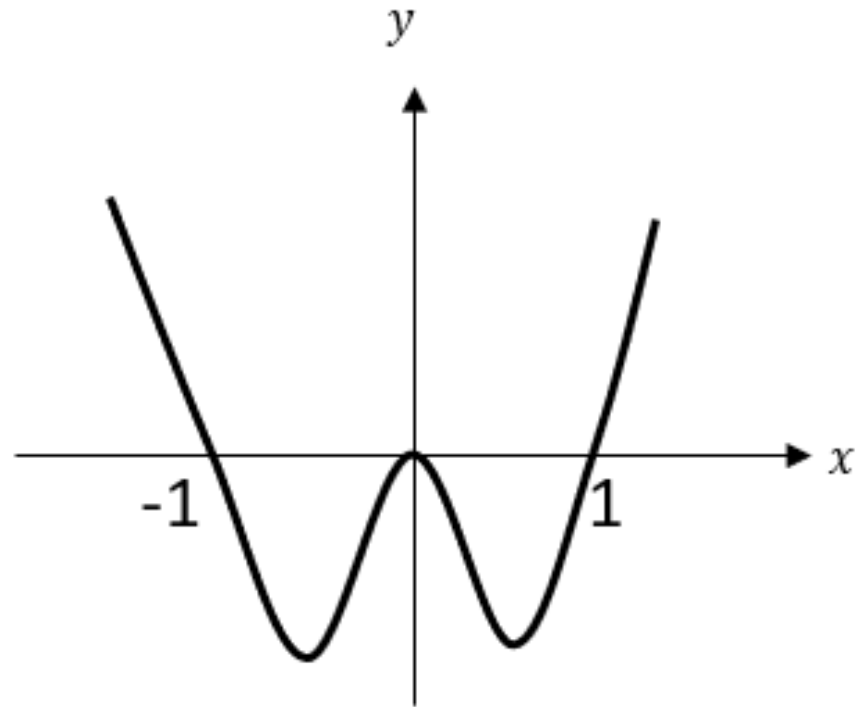
Sketch the graph of:

$$y = x^2(x + 2)(x - 2)$$

Your turn

Sketch the graph of:

$$y = x^2(x + 1)(x - 1)$$



Worked example

Sketch the graph of:

$$y = -(x - 4)(x + 2)^3$$

Your turn

Sketch the graph of:

$$y = -(x + 1)(x - 3)^3$$

