

$$14.2) y = e^x$$

Worked example

Differentiate with respect to x :

$$e^{2x}$$

$$e^{-3x}$$

$$4e^{5x}$$

$$6e^{\frac{1}{3}x}$$

Your turn

Differentiate with respect to x :

$$8e^{-\frac{1}{4}x}$$

$$-2e^{-\frac{1}{4}x}$$

Worked example

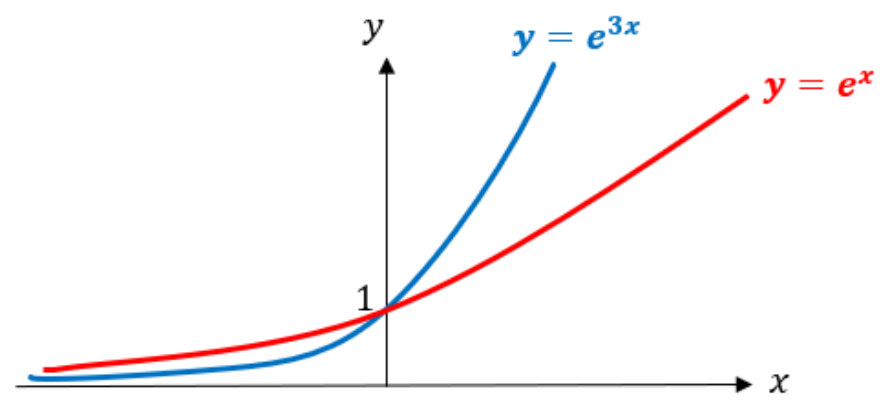
Sketch:

$$y = e^{2x}$$

Your turn

Sketch:

$$y = e^{3x}$$



Worked example

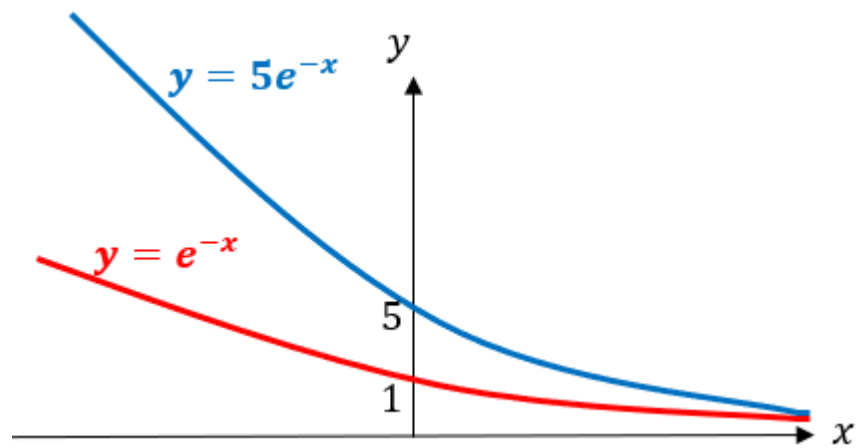
Sketch:

$$y = 10e^{-x}$$

Your turn

Sketch:

$$y = 5e^{-x}$$



Worked example

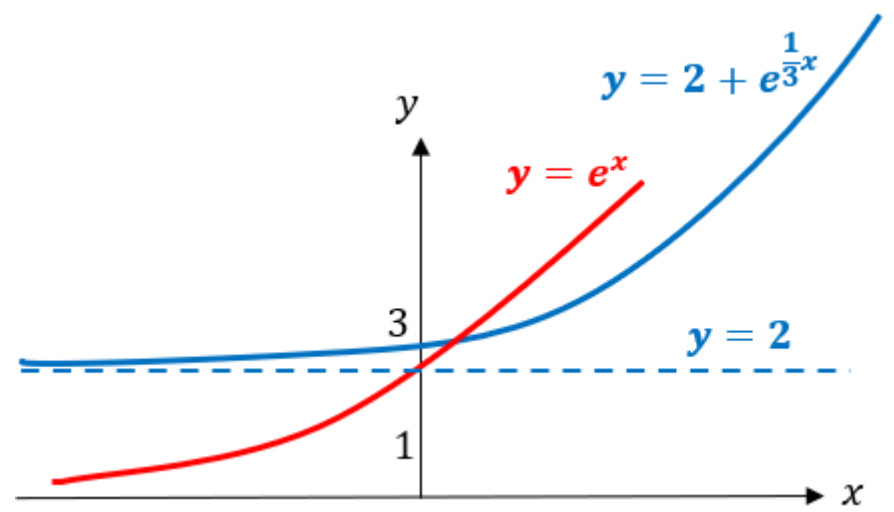
Sketch:

$$y = 3 + 4e^{\frac{1}{2}x}$$

Your turn

Sketch:

$$y = 2 + e^{\frac{1}{3}x}$$



Worked example

Sketch:

$$y = e^{-3x} - 2$$

Your turn

Sketch:

$$y = e^{-2x} - 1$$

