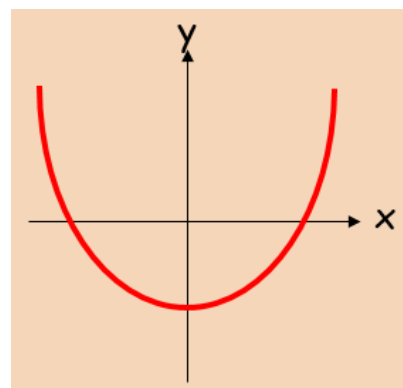
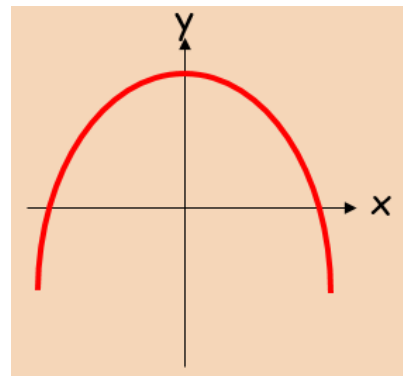
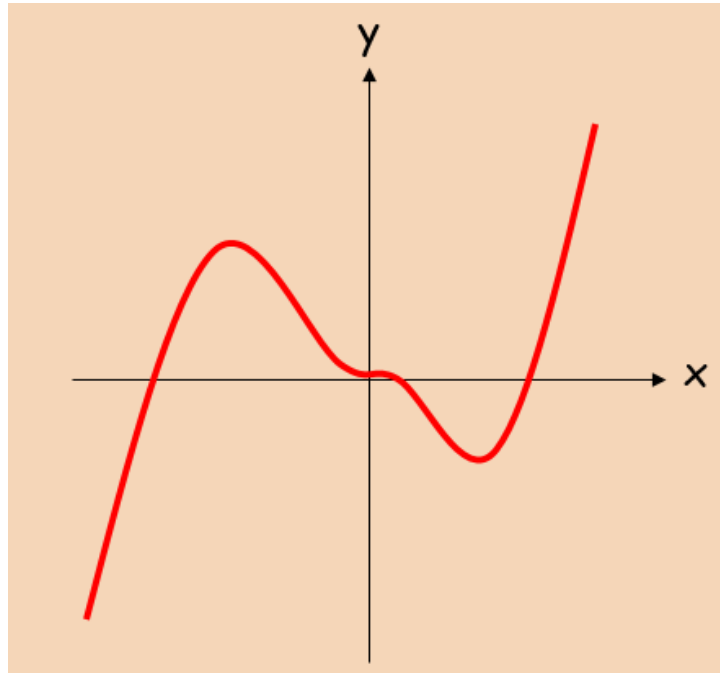


12I Stationary Points



Note on $f''(x) = 0$

1. Find the coordinates of the turning point on the curve $y = x^4 - 32x$, and state whether it is a minimum or maximum.

2. Find the stationary points on the curve: $y = 2x^3 - 15x^2 + 24x + 6$, and state whether they are minima, maxima or points of inflexion