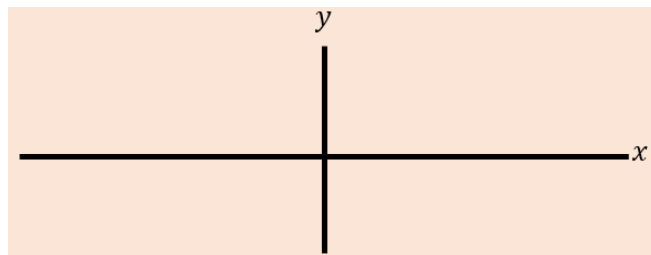


2E Modulus Graphs

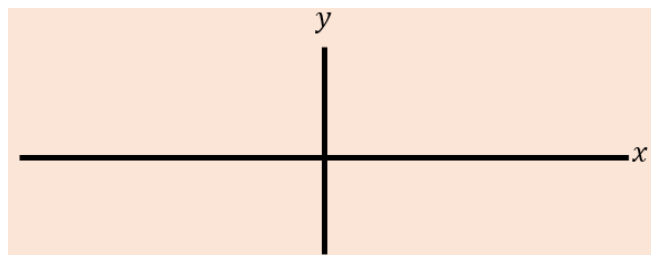
1. Given that:

$$g(x) = \sin x, \quad -360 \leq x \leq 360$$

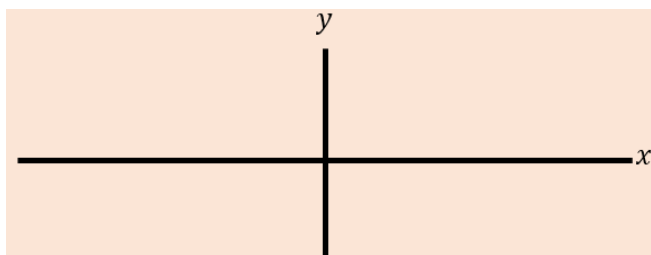
a) Sketch $y = g(x)$



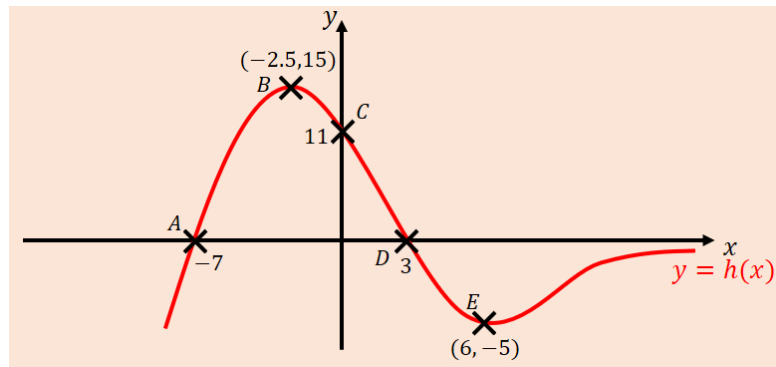
b) Sketch $y = |g(x)|$



c) Sketch $y = g(|x|)$

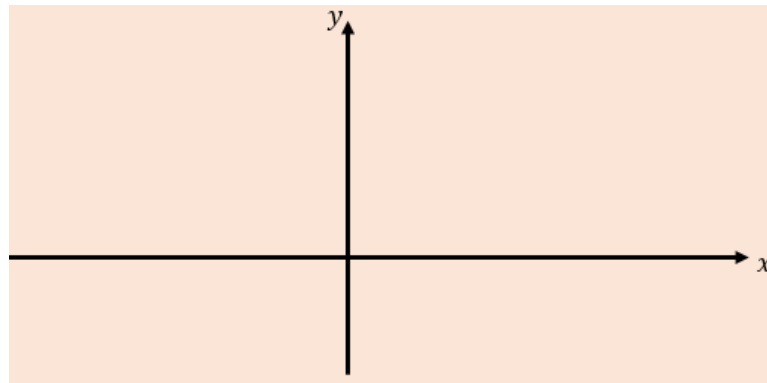


2. The diagram shows the graph of $y = h(x)$, with five points labelled.



Sketch each of the following graphs, labelling points corresponding to A, B, C, D and E , as well as any intersections with the axes.

a) $y = |h(x)|$



b) $y = h(|x|)$

