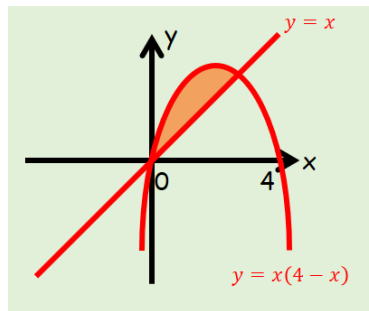


## 13G Finding Areas Between Curves

Option 1:

Option 2:

1.



The diagram shows a sketch of part of the curve with equation:

$$y = x(4 - x)$$

and the line:

$$y = x$$

Find the area of the region bounded by the curve and the line.

2. The diagram below shows a sketch of part of the curve with equation:

$$y = x(x - 3)$$

and the line:

$$y = 2x$$

Find the area of the shaded region OAC.

